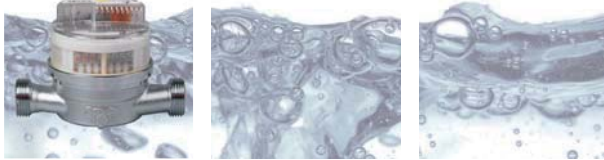


# Water meter modularis WZ-M

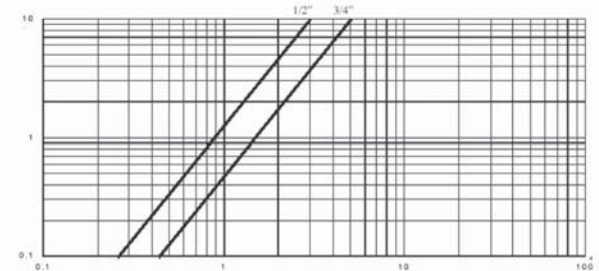


## Description

- Single-jet surface-mounted meter
- Installation position horizontal, vertical, down pipe and ascending
- Metrological classification: B horizontal, A vertical
- Sliding friction optimized materials
- Meter housing rotatable by 360°
- 8-digit roller counter with 3 decimal places
- With PTB and EC-approval
- Retrofittable with Modularis modules for remote meter reading (see page 76/77)



## Typical pressure drop curve



### Volume device

Nominal width (DN)	15	15	20
Nominal flow (Q <sub>n</sub> ) PTB	1,5 m³/h	1,5 m³/h	2,5 m³/h
Nominal flow (Q <sub>n</sub> ) MID	3 m³/h	3 m³/h	5 m³/h
Maximum output frequency (f <sub>max</sub> )	0,83 Hz	0,83 Hz	1,4 Hz
Connection external thread - meter	3/4 inch	3/4 inch	1 inch
Connection external thread - thread	1/2 inch	1/2 inch	3/4 inch
Dimensions (L x H x B)	80 x 69 x 70 mm	110 x 69 x 70 mm	130 x 69 x 70 mm
Weight	0,45 kg	0,5 kg	0,58 kg

### Order information

	Item No.		
WZK-M cold (30° C)	75124015	75124115	75124025
WZW-M warm (90° C)	75124515	75124615	75124525

Please visit our products website for detailed technical informations, drawings and curves.

### Accessory

	Item No.		
Insulating shell small (see page 78)	75120009	75120009	75120010
Pulse module DIN 43864 (see page 84)	8140	8140	8140
M-Bus module (EN 1434-3) (see page 84)	8140	8140	8140
Wireless M-Bus module (see page 85)	8109	8109	8109
Radio module 433 MHz for Q <sub>n</sub> 1,5 - 3,5 (see page 85)	8102	8102	8102
KNX pulse modul (see page 83)	75120004	75120004	75120004

